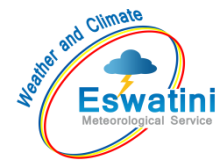


AGROMETEOROLOGICAL BULLETIN

Doc No: TEA 3/3/7/2 F-004
Revision No: 1
Effective Date: 01.07.2017
Page No: 1 of 5
Approved by:



REPORTING PERIOD:
11 – 20 OCTOBER 2024



ISSUE No.: 02

SEASON: 2024/25

RELEASED: 24/10/2024

CONTENTS

| | |
|-----------------------------------|---|
| CONTENTS | 1 |
| HIGHLIGHTS | 1 |
| RAINFALL AND TEMPERATURES | 2 |
| RAINFALL | 2 |
| TEMPERATURES | 3 |
| MAIZE AND OTHER CROPS..... | 3 |
| CURRENT FARMING ACTIVITY | 3 |
| OTHER CROPS | 3 |
| MAIZE CROP STAGE AND CONDITION .. | 3 |
| LIVESTOCK AND PASTURES | 3 |
| WATER SITUATION | 4 |
| MEDIUM-TERM OUTLOOK | 4 |
| RAINFALL | 4 |
| TEMPERATURE..... | 4 |
| SOIL MOISTURE | 4 |
| WIND SPEED | 4 |

HIGHLIGHTS

- **About average rainfall observed...**
- **Fair vegetation condition...**
- **Very few reported land preparation activities...**
- **An increase in rainfall is anticipated...**
- **Cool to warm temperatures forecasted...**
- **Improvement in soil moisture expected...**

AGROMETEOROLOGICAL BULLETIN

Doc No: TEA 3/3/7/2 F-004

Revision No: 1

Effective Date: 01.07.2017

Page No: 2 of 5

Approved by:

RAINFALL AND TEMPERATURES

RAINFALL

About average rainfall was observed in the 2nd dekad of October 2024 (**Figure 1**), especially in the South-western parts (**Map 1**).

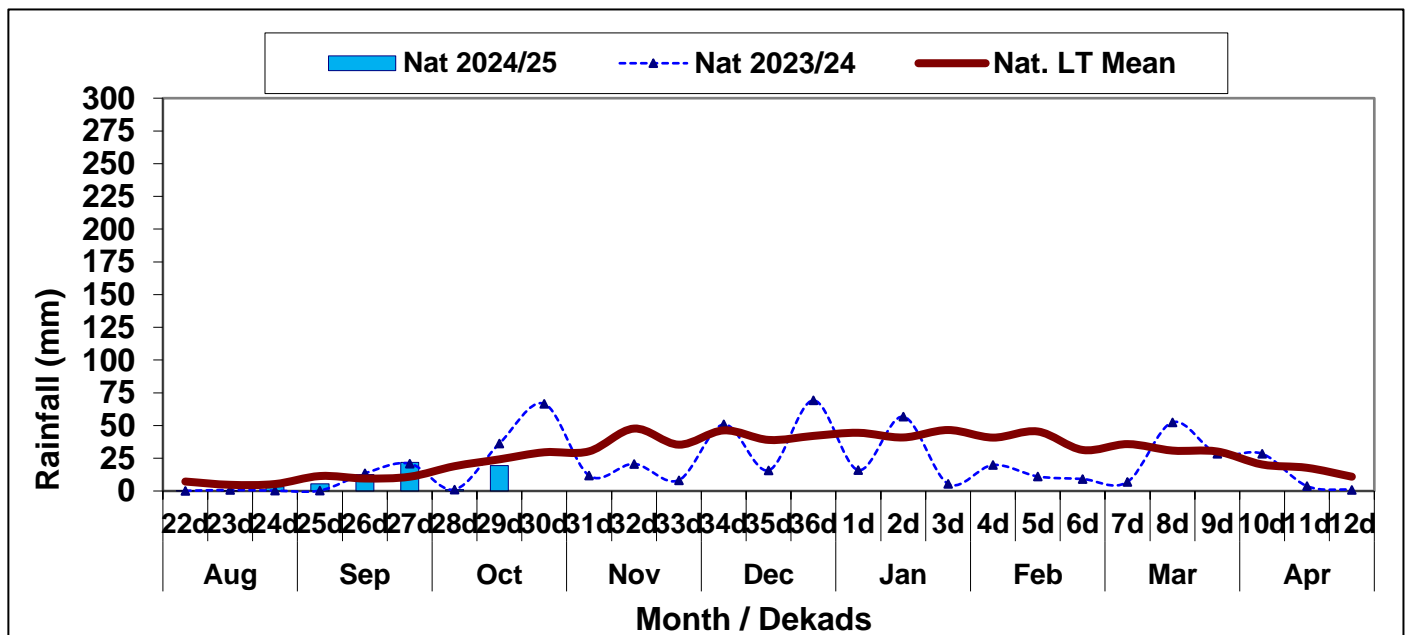
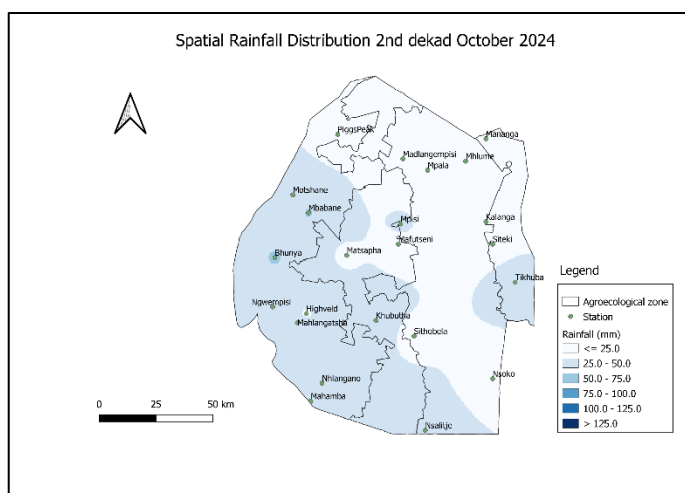
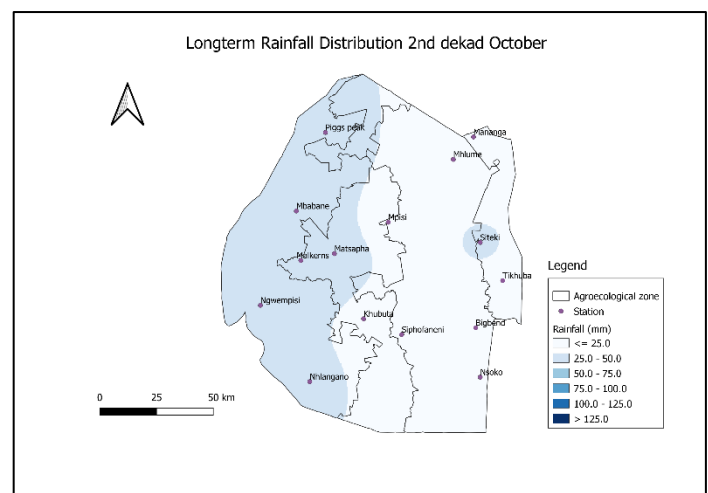


Figure 1: Rainfall distribution 2nd dekad October 2024



Map 1: Spatial rainfall distribution 2nd dekad October 2024



Map 2: Longterm rainfall distribution 2nd dekad October

Compiled and Issued by: Agrometeorological Unit,

Swaziland Meteorological Service, Ministry of Tourism and Environmental Affairs.

Box 2652, Mbabane, Swaziland. ☎ (+268) 2404 8859 / 2404 6274. 📠 Fax: 2404 1530

E-mail: dudu@swazimet.gov.sz

AGROMETEOROLOGICAL BULLETIN

Doc No: TEA 3/3/7/2 F-004
Revision No: 1
Effective Date: 01.07.2017
Page No: 3 of 5
Approved by:

Normal rainfall was mostly received in the Agroecological zones (**Table 1**).

Table 1: Rainfall (mm) 2nd dekad October 2024

| | HV | MV | LV | LP |
|----------------|-------------|--------------|-------------|------------|
| 2023/24 | 44.5 | 24.6 | 35.1 | 44.4 |
| Average | 31.8 | 26.0 | 16.2 | 25.2 |
| 2024/25 | 25.4 | 14.8 | 14.4 | 27.7 |
| Anomaly | -6.4 | -11.2 | -1.8 | 2.4 |

TEMPERATURES

Cool to warm to hot temperatures were observed generally during the reporting period (**Figure 2**).

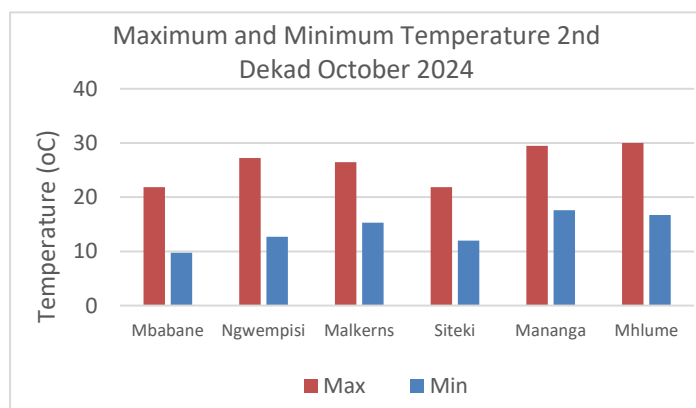


Figure 2: Minimum temperature 2nd dekad of October 2024

MAIZE AND OTHER CROPS

CURRENT FARMING ACTIVITY

Farmers are awaiting sufficient rainfall to commence land preparation and planting in most parts.

OTHER CROPS

No other crops have been reported to have been planted.

MAIZE CROP STAGE AND CONDITION

Very few farmers planted maize with early rains and is reported to be in good condition.

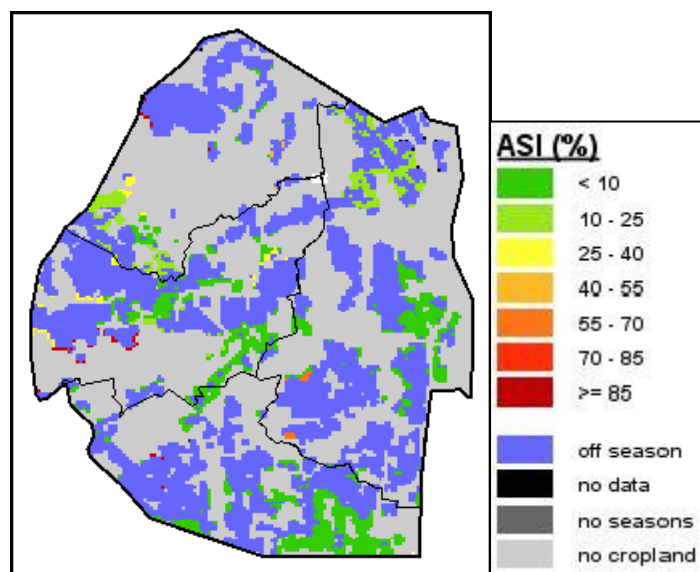


Image 1: Agriculture Stress Index 2nd dekad October 2024
Source: FAO-GIEWS

LIVESTOCK AND PASTURES

Livestock is in fair condition as rangelands are reported to be in fair condition.

AGROMETEOROLOGICAL BULLETIN

Doc No: TEA 3/3/7/2 F-004

Revision No: 1

Effective Date: 01.07.2017

Page No: 4 of 5

Approved by:

WATER SITUATION

Not much improvement in most dam levels with the recent rains.

MEDIUM-TERM OUTLOOK

RAINFALL

Significant rainfall is expected in the outlook period.

TEMPERATURE

Cool to warm temperatures are anticipated in the outlook period.

SOIL MOISTURE

An improvement in soil moisture is expected in the outlook period.

WIND SPEED

Wind will generally be light to moderate in the outlook period

NB: Outlook period is ten days from date of issue

Compiled and Issued by: Agrometeorological Unit,

Swaziland Meteorological Service, Ministry of Tourism and Environmental Affairs.

Box 2652, Mbabane, Swaziland.  (+268) 2404 8859 / 2404 6274. Fax: 2404 1530

E-mail: dudu@swazimet.gov.sz

AGROMETEOROLOGICAL BULLETIN

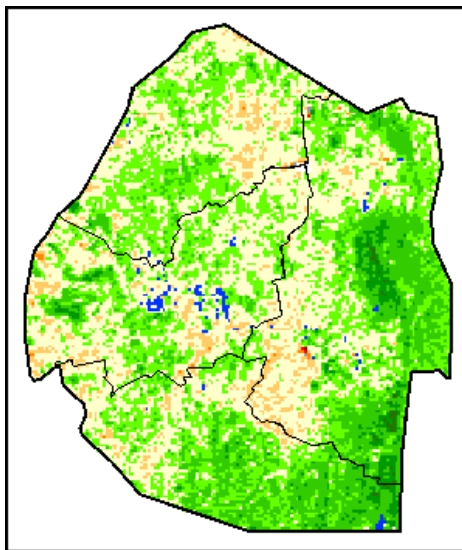
Doc No: TEA 3/3/7/2 F-004

Revision No: 1

Effective Date: 01.07.2017

Page No: 5 of 5

Approved by:



Legend

Difference to LTA

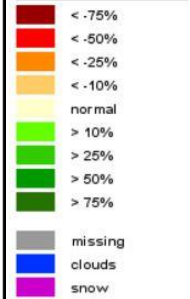
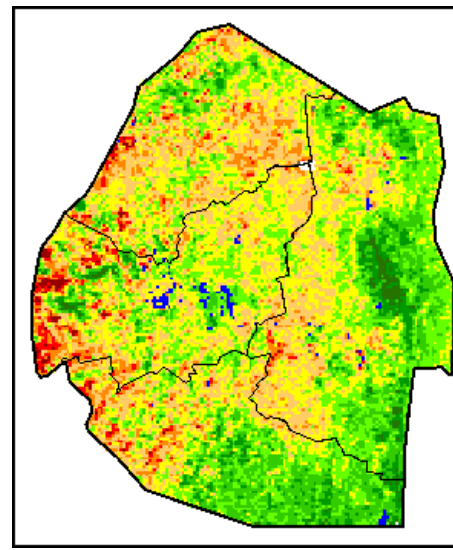


Image 2: Normalized Difference Vegetation Index (NDVI) Anomaly (2nd Dekad October 2024)
Source: FAO-GIEWS



Legend

VHI

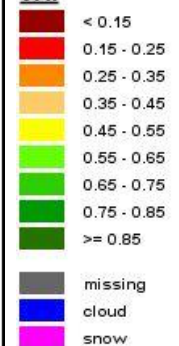


Image 3: Vegetation Health Index (VHI) (2nd Dekad October 2024)
Source: FAO-GIEWS

Compiled and Issued by: Agrometeorological Unit,

Swaziland Meteorological Service, Ministry of Tourism and Environmental Affairs.

Box 2652, Mbabane, Swaziland. ☎ (+268) 2404 8859 / 2404 6274. Fax: 2404 1530

E-mail: dudu@swazimet.gov.sz